



FERNS

For more in-depth information please visit
www.help.gardeningexpress.co.uk

1 IMMEDIATE CARE

After delivery make sure you water your plant until the soil is moist, then check over the plant to make sure it is in good condition.



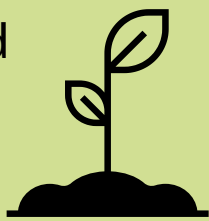
POSITION 2

- **Soil Conditions:** Thrive in soil with lots of organic matter
- **Light:** Dappled Shade
- **Best Time to Plant:** Autumn or Spring



3 PLANTING

It is important that you remove the plant from its nursery pot, so plant in a container or in the ground as soon as possible.



ESTABLISHING 4

Water the plants in small amounts regularly, but do not over water. The soil should be moist at all times, we recommend watering close to the base of the plant instead of at the top.



5 CARING

- In Spring, mulching around the base with garden compost will reduce the number of weeds appearing.
- Prune browning leaves when needed

