



# POINSETTIA

For more in-depth information please visit  
[www.help.gardeningexpress.co.uk](http://www.help.gardeningexpress.co.uk)

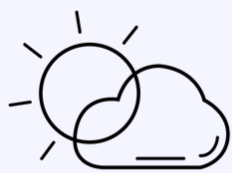
## 1 IMMEDIATE CARE

After delivery make sure you water your plant until the soil is moist then check over the plant to make sure it is in good condition.



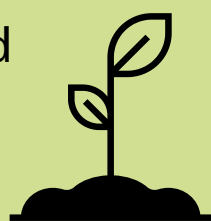
## POSITION 2

- **Light:** Bright, indirect light
- **Soil:** Drought-free with temperatures between 13-15°C
- **Watering:** Water sparingly, only when soil has started to dry out. Mist regularly to create humidity



## 3 PLANTING

It is important that you remove the plant from its nursery pot, so plant in a container or in the ground as soon as possible.



## ESTABLISHING 4

Water in small amounts, the soil should be moist at all times, we recommend watering close to the base of the plant instead of at the top.



## 5 CARING

- After Christmas, feed with tomato feed monthly
- In April, prune back to around 10cm, keeping at 13°C
- In May, repot in a slightly larger pot with fresh peat-free compost. Keep out of direct sunlight and below 18°C
- In November, keep in a dark room for 12 hours a day at around 18°C

