

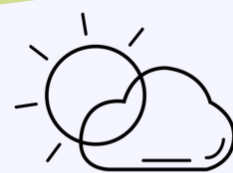


XMAS TREE

For more in-depth information please visit
www.help.gardeningexpress.co.uk

1 IMMEDIATE CARE

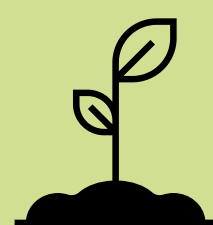
Once you have received your tree we recommend you keep it outside with the stump in a bucket of water for as long as possible before you wish to bring it inside, this will ensure the longest possible life for your tree in the home. The longer you keep outside, the longer the life of your tree over the festive period.



BRINGING INDOORS 2

When you are ready to bring your tree inside, you will need to remove the netting from your Christmas Tree, it is best to do this outside as there will be a small amount of loose needles, this is normal and nothing to worry about it is simply a result of the netting and transportation and will happen to all trees. It is also caused by the initial shock the tree receives while being cut at the plantation and the trees will drop all of the older needles that they would have dropped anyway while they were growing.

3 POSITIONING



Position your tree away from direct heat sources such as radiators and open fires as this can dry out and damage the tree. Ideally your tree should be positioned somewhere so that it gets a few hours of natural light each day, even if it isn't direct sunlight. Think of your tree like a bunch of cut flowers.

CARING 4

Your living tree, just like any living plant needs to be watered, your stand should be able to hold plenty of water around the stump. It is best to use warm water the first time you fill your tree stand as this allows the sap to move more freely around the tree. Because your tree has been freshly cut there is no need to trim the base, although you can do so if you wish.

Most trees will need to be watered once per day to ensure the base of the tree never dries out, your tree will drink several litres per day in the first week or two. Loss of needles is usually a result of the tree drying out.